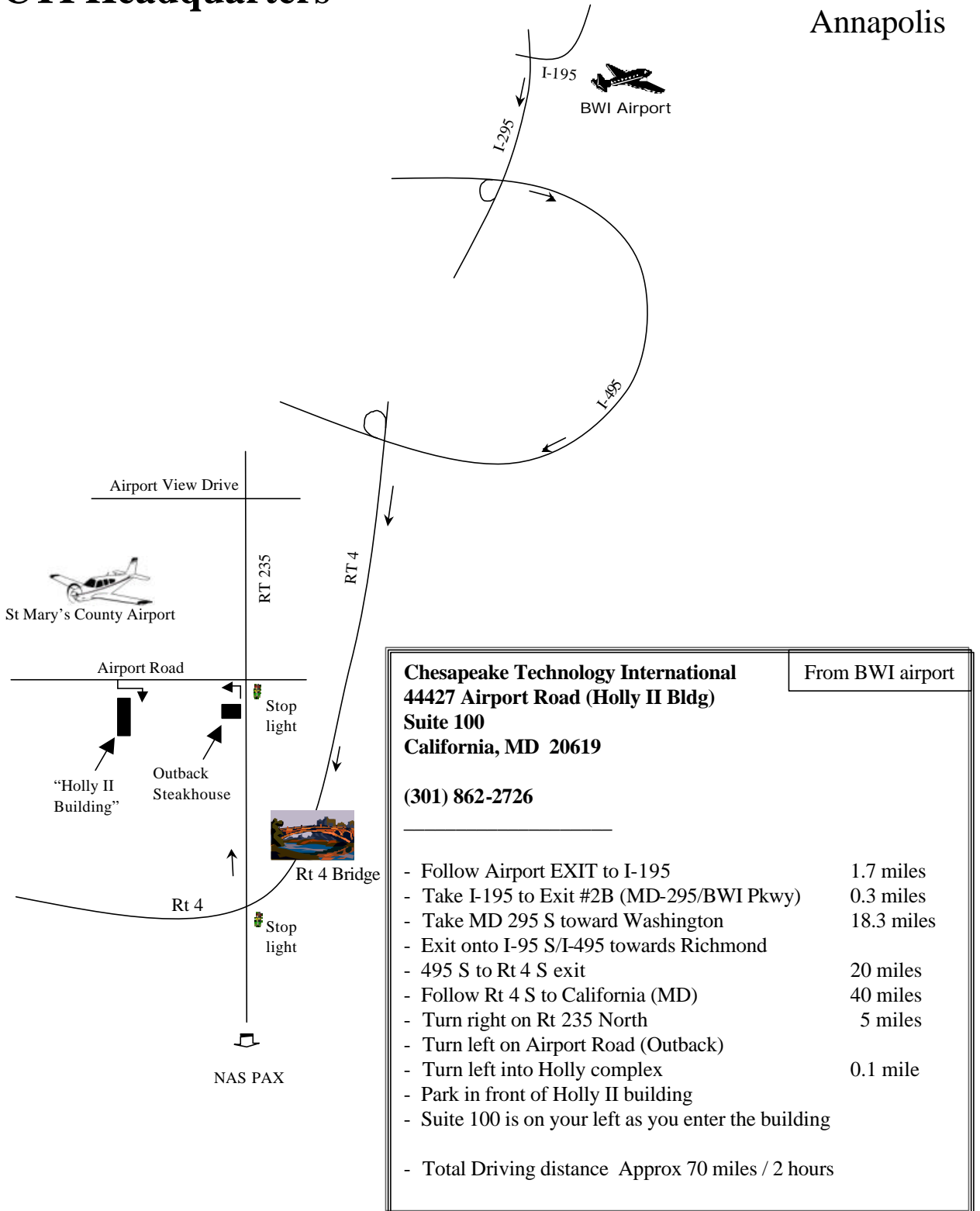


BWI Airport to CTI Headquarters

Baltimore

Annapolis



Chesapeake Technology International
44427 Airport Road (Holly II Bldg)
Suite 100
California, MD 20619

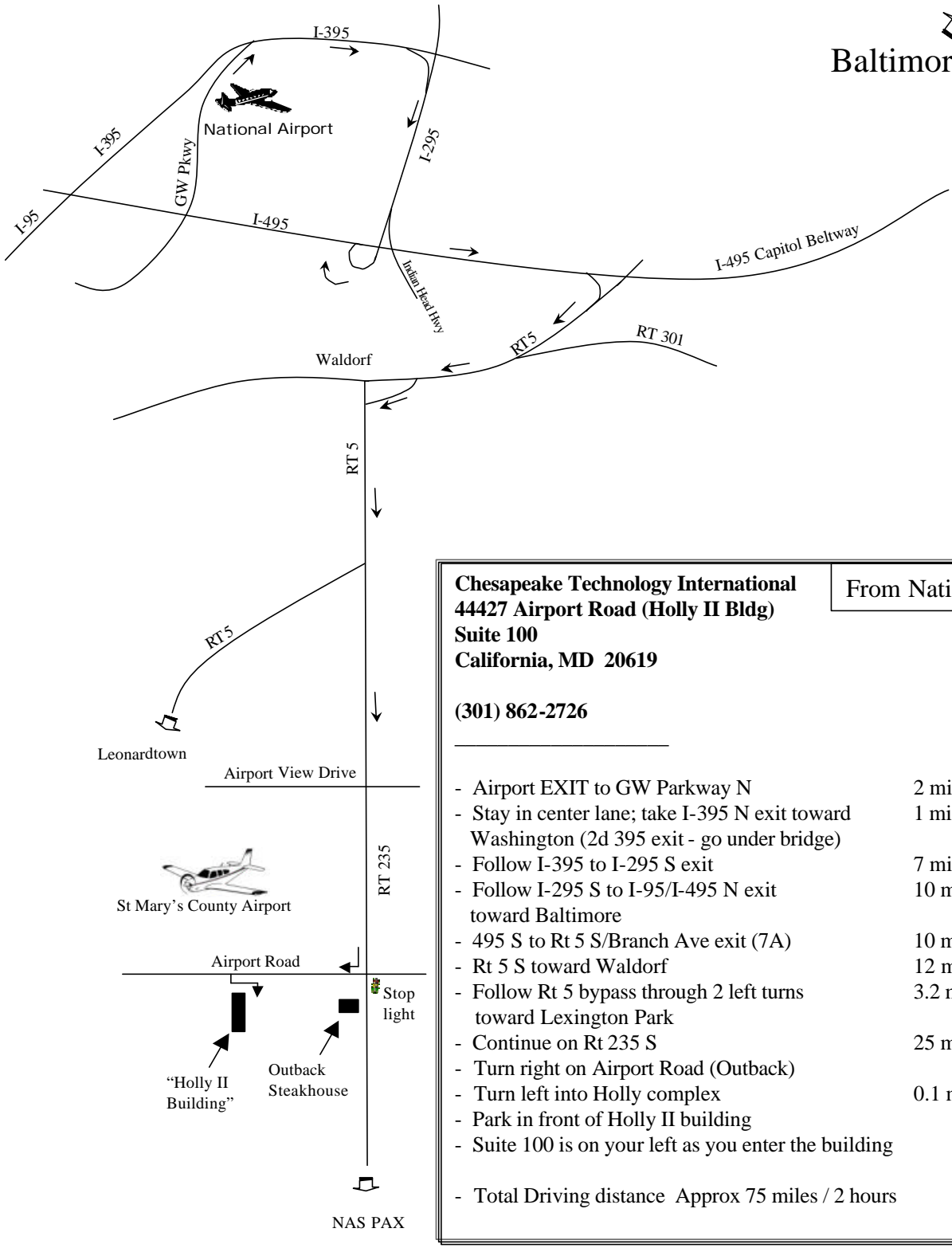
(301) 862-2726

From BWI airport

- Follow Airport EXIT to I-195
- Take I-195 to Exit #2B (MD-295/BWI Pkwy)
- Take MD 295 S toward Washington
- Exit onto I-95 S/I-495 towards Richmond
- 495 S to Rt 4 S exit
- Follow Rt 4 S to California (MD)
- Turn right on Rt 235 North
- Turn left on Airport Road (Outback)
- Turn left into Holly complex
- Park in front of Holly II building
- Suite 100 is on your left as you enter the building
- Total Driving distance

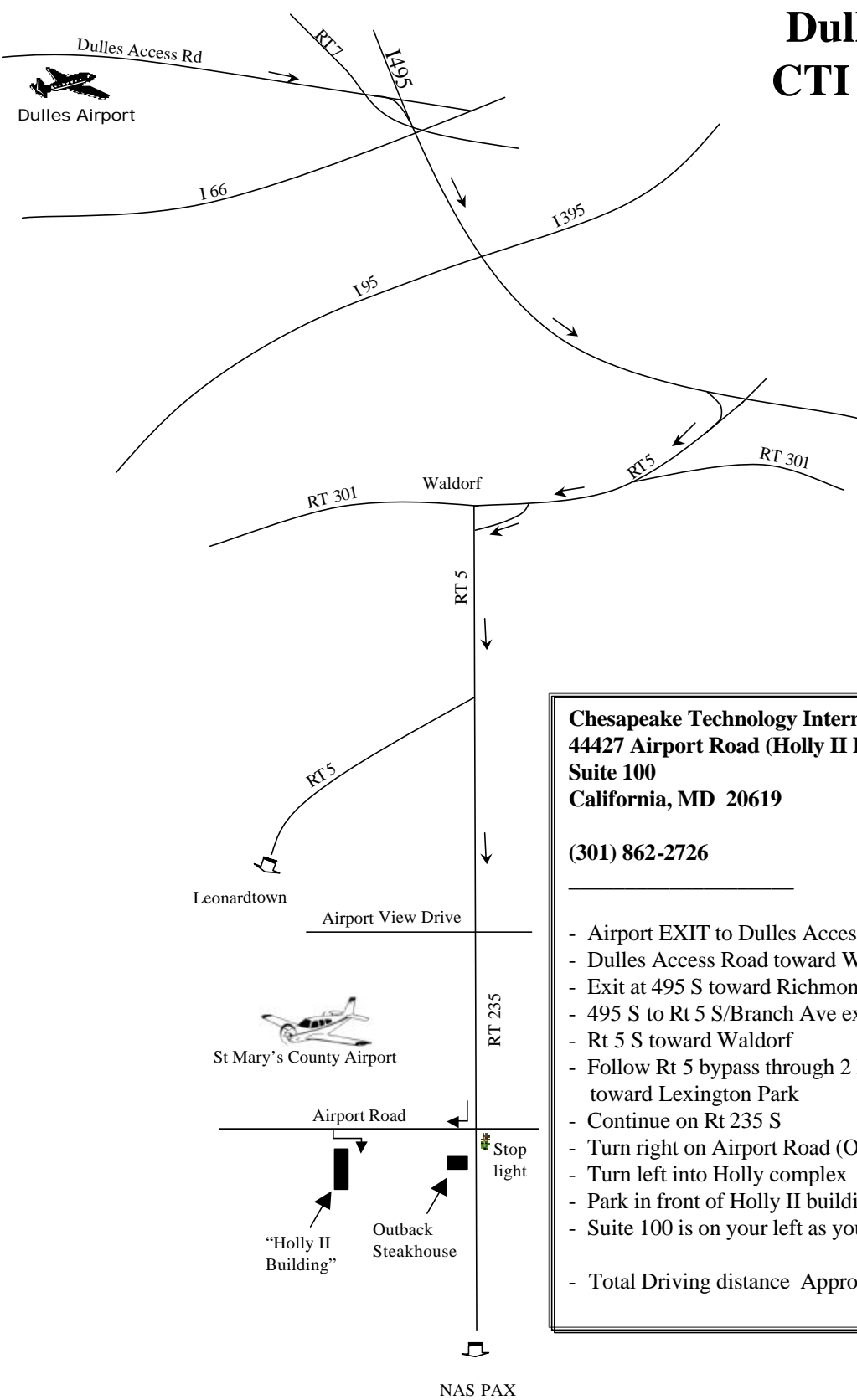
National Airport to CTI Headquarters

Baltimore 



<p>Chesapeake Technology International 44427 Airport Road (Holly II Bldg) Suite 100 California, MD 20619</p> <p>(301) 862-2726</p>	<p>From National</p>
<ul style="list-style-type: none"> - Airport EXIT to GW Parkway N 2 miles - Stay in center lane; take I-395 N exit toward Washington (2d 395 exit - go under bridge) 1 mile - Follow I-395 to I-295 S exit 7 miles - Follow I-295 S to I-95/I-495 N exit toward Baltimore 10 miles - 495 S to Rt 5 S/Branch Ave exit (7A) 10 miles - Rt 5 S toward Waldorf 12 miles - Follow Rt 5 bypass through 2 left turns toward Lexington Park 3.2 miles - Continue on Rt 235 S 25 miles - Turn right on Airport Road (Outback) 0.1 mile - Turn left into Holly complex 0.1 mile - Park in front of Holly II building - Suite 100 is on your left as you enter the building 	
<p>- Total Driving distance Approx 75 miles / 2 hours</p>	

Dulles Airport to CTI Headquarters



<p>Chesapeake Technology International 44427 Airport Road (Holly II Bldg) Suite 100 California, MD 20619</p>	<p>From Dulles</p>
<p>(301) 862-2726</p>	
<ul style="list-style-type: none"> - Airport EXIT to Dulles Access Road 2 miles - Dulles Access Road toward Washington 20 miles - Exit at 495 S toward Richmond 25 miles - 495 S to Rt 5 S/Branch Ave exit (7A) 12 miles - Rt 5 S toward Waldorf 3.2 miles - Follow Rt 5 bypass through 2 left turns toward Lexington Park 25 miles - Continue on Rt 235 S 0.1 mile - Turn right on Airport Road (Outback) - Turn left into Holly complex 0.1 mile - Park in front of Holly II building - Suite 100 is on your left as you enter the building 	
<p>- Total Driving distance Approx 90 miles / 2 hours</p>	